

TECHNICAL DATASHEET

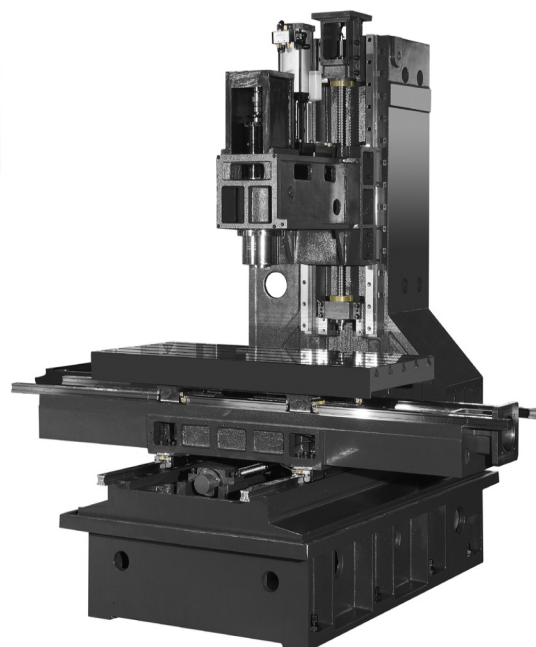
Delta Center V10L

CNC MACHINING CENTER





- Siemens 828D incl. 10.4" TFT monitor
- High-quality Rexroth linear guides in all axes
- Meehanite cast iron tempered for stress relief to ensure structural stability without deformation
- C3 class ballscrews ensure the highest accuracy and durability
- Strong main spindle, (ROYAL / Cells), 10.000 min⁻¹ ISO or BT 40



Technical specifications		V10L
Table		
Table size	mm	1100 x 500
T-slot (width x number x distance)	mm	18 x 5 x 100
Max. load	kg	600
Travel		
X/Y/Z travel	mm	1020 / 520 / 550
Spindle nose to table	mm	120-670
Spindle center to column	mm	566
Spindle		
Spindle taper	- / mm	ISO 40 / BT40 / 120
Spindle speed	min ⁻¹	10.000
Spindle servo motor	kW	7.5 / 11
Tool changer		
Number of tools	pcs.	24
Max. diameter	mm	78 / 125
Max. tool length	mm	300
Max. tool weight	kg	8
Feed		
Rapid feed	m/min	30 (opt. 48)
Cutting speed	mm/min	1-12.000
Accuracy		
Positioning accuracy	mm	± 0.005 / 300
Repeatability	mm	± 0.003
Dimensions & weight		
Dimensions	mm	2570 x 2160 x 2850
Weight	kg	5000
Item-No.		6430013

Standard configuration:

- ✓ Siemens 828 D
- ✓ Electronic handwheel (MPG)
- ✓ Telescopic cover in all axes
- ✓ Rexroth linear guides in all 3 axes
- ✓ Fully enclosed splash guard
- ✓ Safety door
- ✓ Tapping without compensating chuck
- ✓ USB, CF card, Ethernet
- ✓ Double arm tool changer with 24 stations
- ✓ Heat exchanger for switch cabinet
- ✓ Main spindle with belt drive, max. 10.000 min⁻¹
- ✓ Optional spindle taper with ISO 40 (DIN 69871/72) or BT 40
- ✓ Automatic lubrication system
- ✓ Coolant system
- ✓ Chip flushing device
- ✓ LED working light
- ✓ End of program light
- ✓ Levelling screws and bolts
- ✓ Air gun
- ✓ Tool box
- ✓ Operation manual

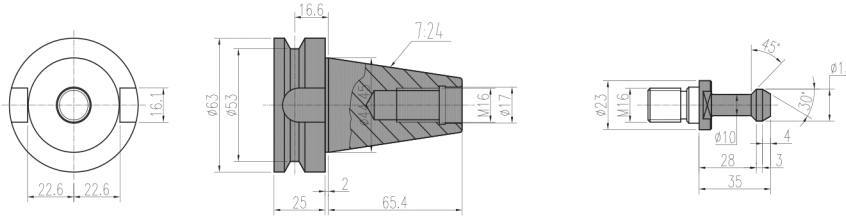
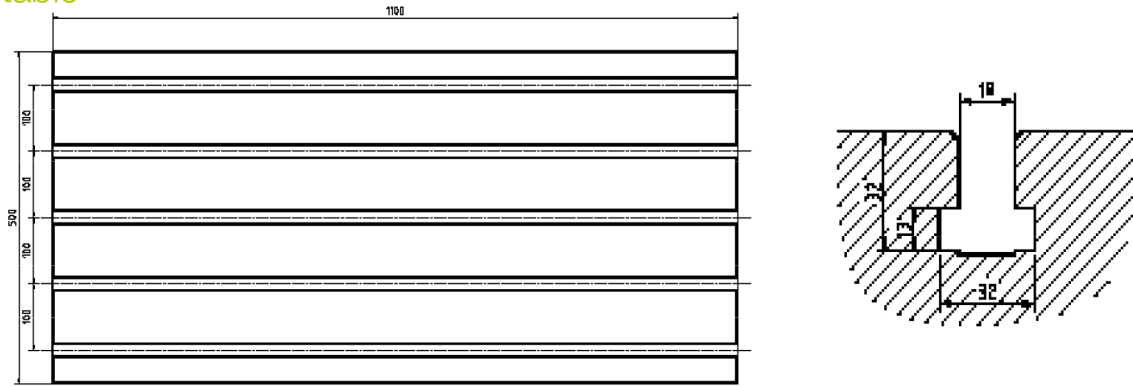
Optionales configuration:

- Spindle oil cooler
- Oil skimmer
- Coolant through spindle with 20/50 bar (CTS)
- Mitsubishi M 730 V
- Heidenhain TNC 620
- Oil mist extraction
- Workpiece measurement
- Tool measurement
- NC rotary table - 4th axis
- Called tiltingtable - 4/5th axis
- Cold air - Air exit 4°-6°
- Direct drive 15,000 min⁻¹
- Screw conveyor or chain chip conveyor
- Linear guides in roller design
- Stand-alone control panel

*Specifications above are subject to change without notice, no liability for printing errors. The machine can be shown with optional equipment.

KAAST Werkzeugmaschinen GmbH · Gadelander Straße 172 · D-24539 Neumünster / Germany · Phone: +49 (0) 4321-25 20 03-0 · Fax: +49 (0) 4321-25 20 03-90 · E-Mail: info@kaast.de

Work table

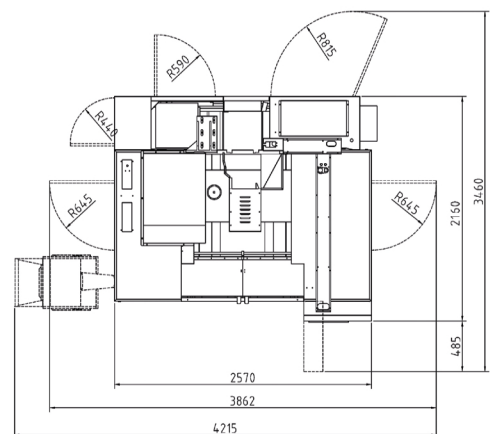
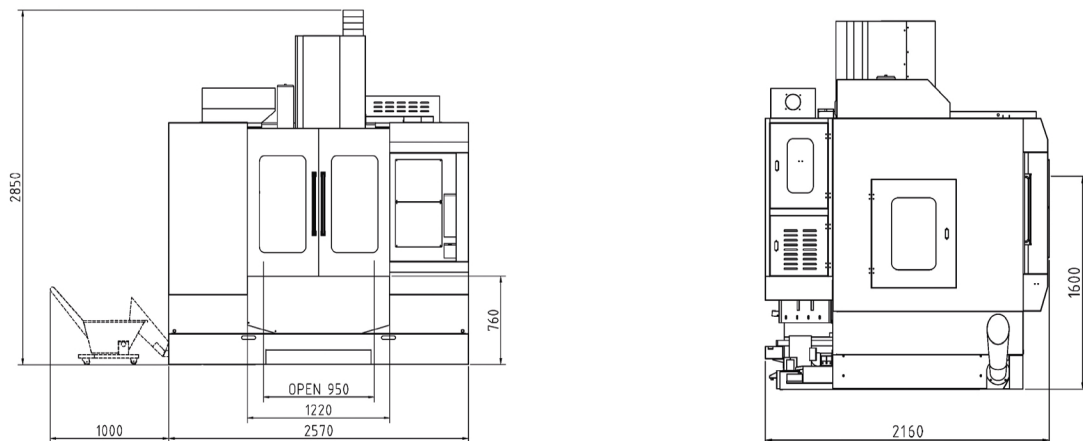


MAS403 BT40

MAS403P40T-1(45°)

ISO 40 tool holder and pull stud (optional BT40)

Dimensions

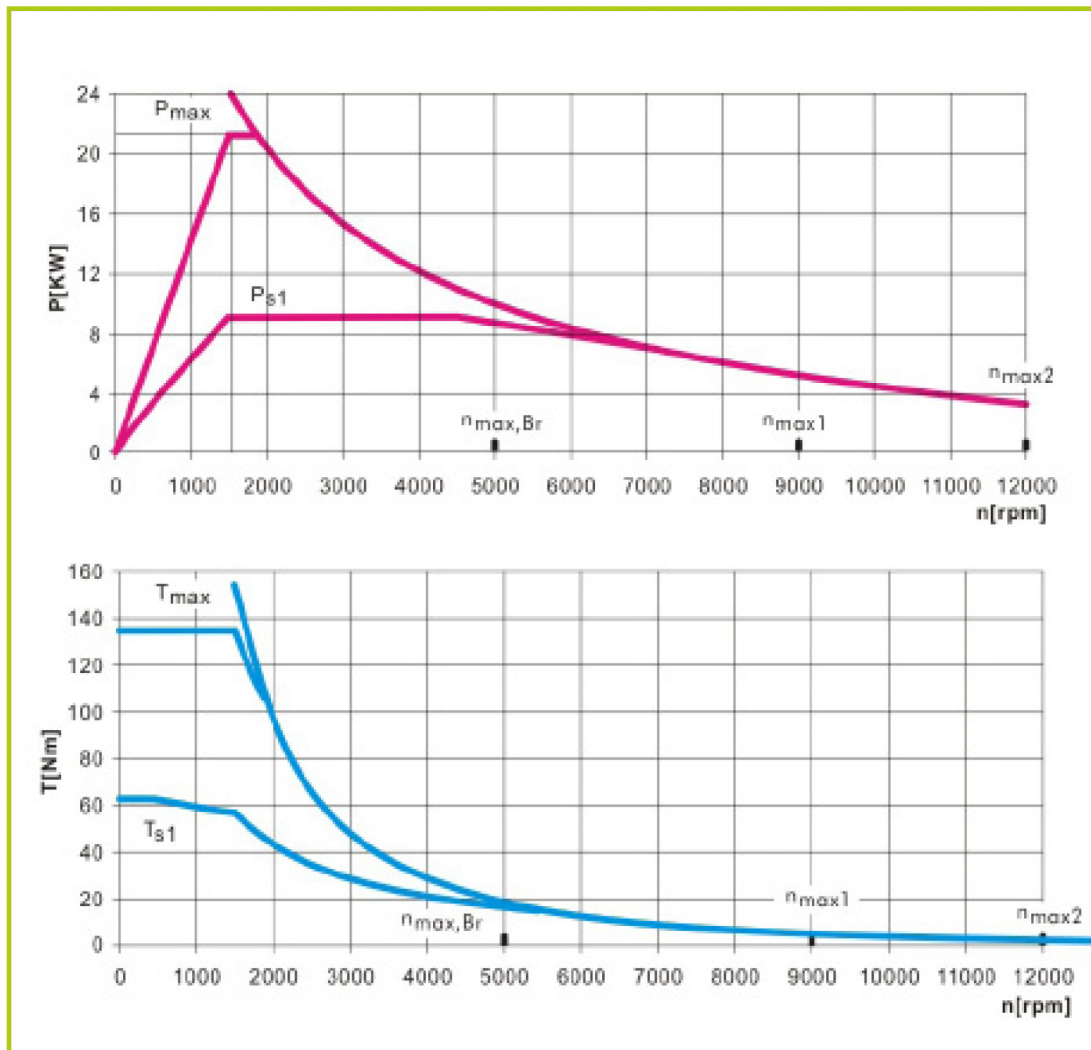


4th axis, various sizes

*Specifications above are subject to change without notice, no liability for printing errors. The machine can be shown with optional equipment.

KAAST Werkzeugmaschinen GmbH · Gadelander Straße 172 · D-24539 Neumünster / Germany · Phone: +49 (0) 4321-25 20 03-0 · Fax: +49 (0) 4321-25 20 03-90 · E-Mail: info@kaast.de

Torque curves for standard Siemens version



*Specifications above are subject to change without notice, no liability for printing errors. The machine can be shown with optional equipment.

KAAST Werkzeugmaschinen GmbH · Gadelander Straße 172 · D-24539 Neumünster / Germany · Phone: +49 (0) 4321-25 20 03-0 · Fax: +49 (0) 4321-25 20 03-90 · E-Mail: info@kaast.de