

TECHNICAL DATASHEET

Alpha Center V13L

CNC VERTICAL MACHINING CENTER



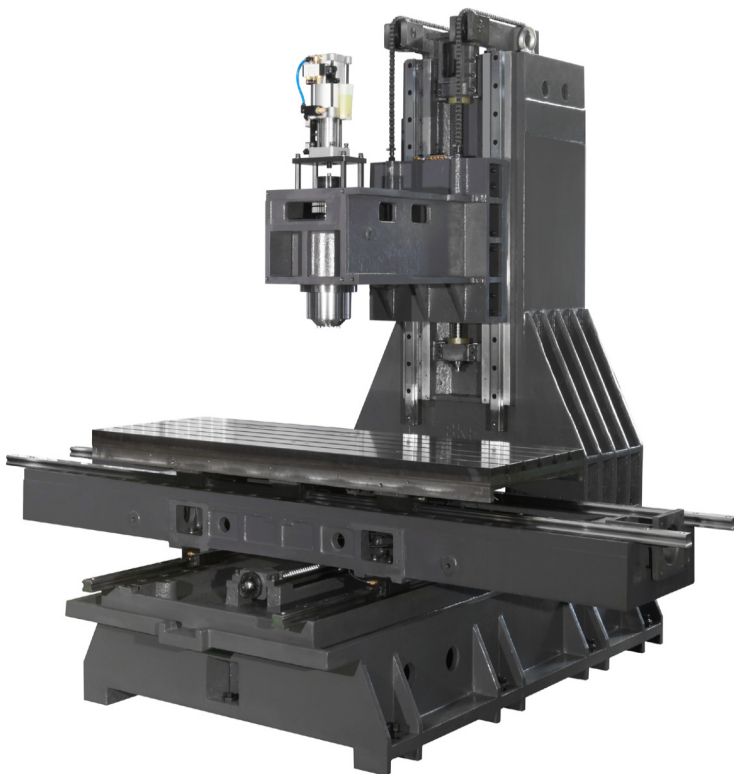


Standard configuration:

- ✓ Siemens 828D control
- ✓ Fully enclosed splash guard
- ✓ Cooling for switch cabinet
- ✓ Casting with reinforcement
- ✓ Intranet connection and Connection for CF memory card, USB interface
- ✓ Automatic lubrication system
- ✓ Coolant system
- ✓ Chip flushing device
- ✓ Safety door
- ✓ Tapping without compensating chuck
- ✓ Heat exchanger
- ✓ Double arm tool changer with 24 stations
- ✓ LED work lamp
- ✓ Signal for program end
- ✓ Electronic handwheel (MPG) HIWIN
- ✓ Tool box
- ✓ Alignment screws and records
- ✓ Water gun for manual flushing
- ✓ Air gun
- ✓ Operation manual

- Siemens 828D incl. 10.4" TFT monitor
- High-quality Rexroth linear guides in all axes
- Meehanite cast iron tempered for stress relief to ensure structural stability without deformation
- C3 class ballscrews ensure the highest accuracy and durability
- NSK or FAG main spindle bearings
- Powerful main spindle, (ROYAL / Cells), 10.000 min⁻¹ ISO or BT 40

Technical specifications		V13L
Table		
Table size	mm	1400 x 600
T-slot (width x number x distance)	mm	18 x 5 x 100
Max. load	kg	1000
Travel		
X / Y / Z travel	mm	1300 / 760 / 670
Spindle nose to table	mm	100 - 770
Spindle center to column	mm	797
Spindle		
Spindle taper	- / mm	SK40 / BT40 / CAT40 / BBT40
Spindle speed	min ⁻¹	10.000
Spindle servo motor	kW	15 / 38 (Fanuc 11 / 18,5)
Tool changer		
Number of tools	pcs.	24
Max. length	mm	300
Max. diameter	mm	78 / 125
Max. tool weight	kg	8
Feed		
Rapid feed	m/min	24
Cutting speed	mm/min	1-12.000
Accuracy		
Positioning accuracy	mm	± 0.006 / 300
Repeatability	mm	± 0.004
Dimensions & weight		
Dimensions	mm	3700 x 2640 x 3100
Weight	kg	8000
Item-No.		6430009



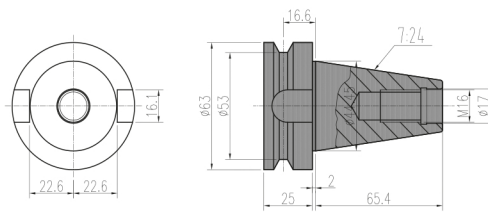
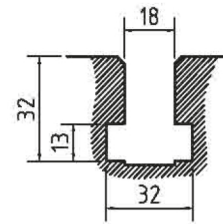
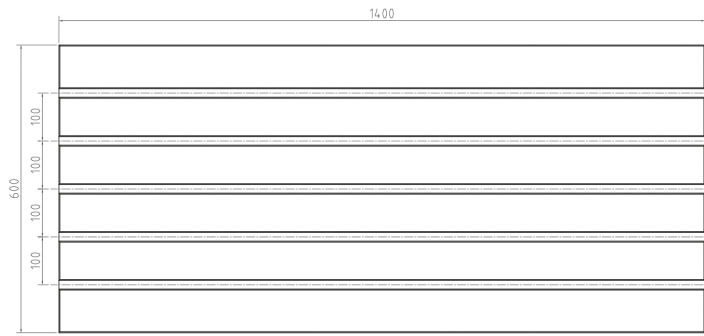
Optional configuration:

- Double arm gripper tool changer with 30 tool places (optional with ISO 50)
- Workpiece measurement
- Tool measurement
- Higher rapid traverse rates
- Screw conveyor or chain chip conveyor
- 4th axis
- Called tiltingtable - 4/5th axis
- CTS Internal spindle cooling
- Linear guides in roller design
- Optional controls: Heidenhain TNC 620, Mitsubishi M 730 V, Fanuc Oi MF

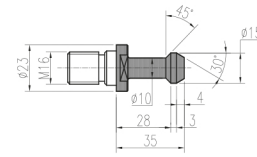
*Specifications above are subject to change without notice, no liability for printing errors. The machine can be shown with optional equipment.

KAAST Werkzeugmaschinen GmbH · Gadelander Straße 172 · D-24539 Neumünster / Germany · Phone: +49 (0) 4321-25 20 03-0 · Fax: +49 (0) 4321-25 20 03-90 · E-Mail: info@kaast.de

Work table



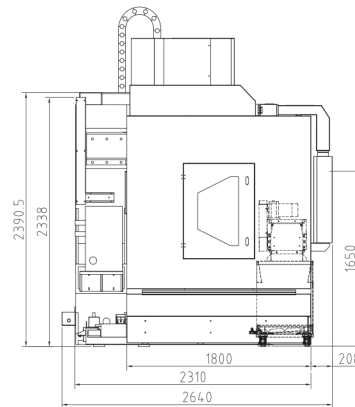
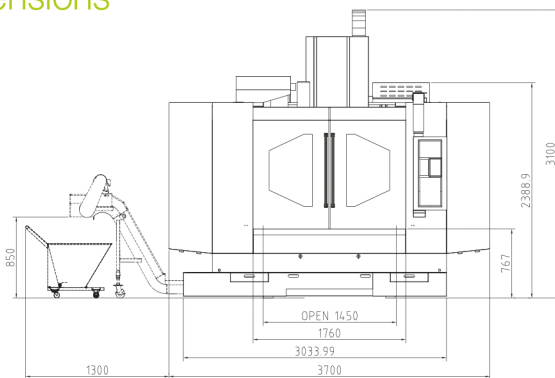
MAS403 BT40



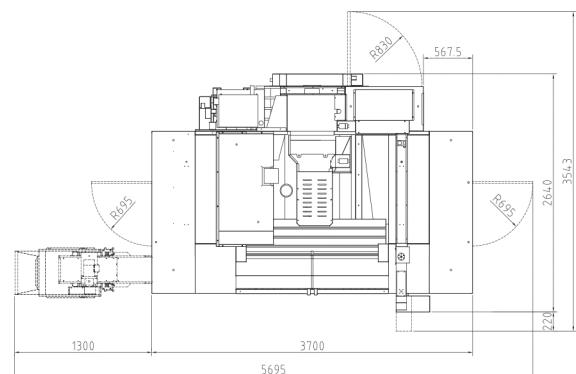
MAS403P40T-1(45°)

ISO 40 tool holder and pull stud (optional BT40)

Dimensions



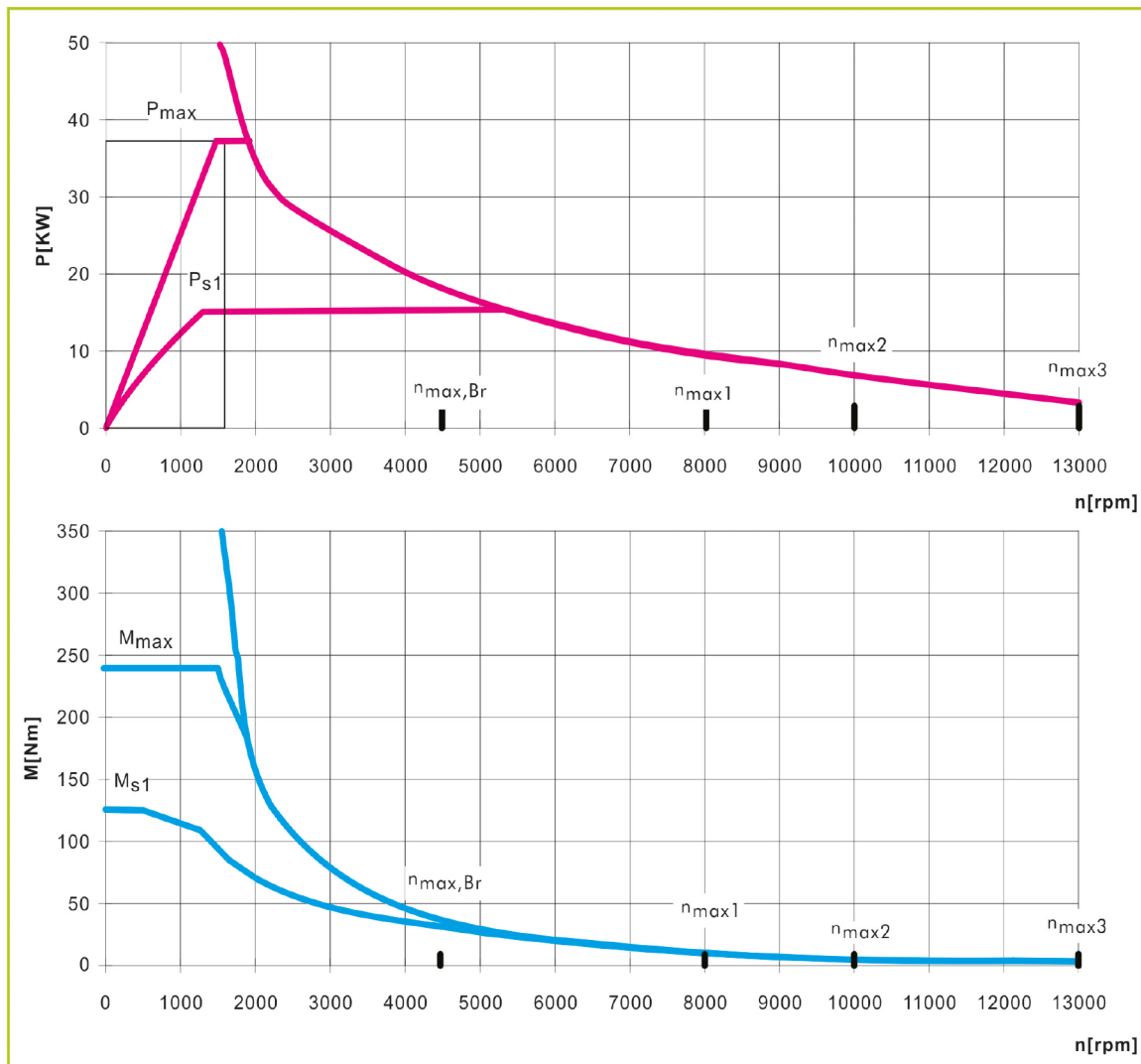
5th axis, various sizes



*Specifications above are subject to change without notice, no liability for printing errors. The machine can be shown with optional equipment.

KAAST Werkzeugmaschinen GmbH · Gadelander Straße 172 · D-24539 Neumünster / Germany · Phone: +49 (0) 4321-25 20 03-0 · Fax: +49 (0) 4321-25 20 03-90 · E-Mail: info@kaast.de

Torque curves for Siemens standard version



*Specifications above are subject to change without notice, no liability for printing errors. The machine can be shown with optional equipment.

KAAST Werkzeugmaschinen GmbH · Gadelander Straße 172 · D-24539 Neumünster / Germany · Phone: +49 (0) 4321-25 20 03-0 · Fax: +49 (0) 4321-25 20 03-90 · E-Mail: info@kaast.de